

transubstantiation

solo double bass

geer

♩ = c.60

First staff of music in bass clef. It begins with a whole note G2, followed by a half note G2, and then a half note G2. A slur covers the next two measures, containing a quarter note G2 and a quarter note G2. A fifth finger fingering (5) is written above the second measure. The staff ends with a whole note G2 marked with an accent (^).

Second staff of music in bass clef. It begins with a whole note G2, followed by a half note G2, and then a half note G2. A slur covers the next two measures, containing a quarter note G2 and a quarter note G2. A fifth finger fingering (5) is written above the second measure. The staff ends with a whole note G2 marked with an accent (^).

Third staff of music in bass clef. It begins with a whole note G2, followed by a half note G2, and then a half note G2. A slur covers the next two measures, containing a quarter note G2 and a quarter note G2. A fifth finger fingering (5) is written above the second measure. The staff ends with a whole note G2 marked with an accent (^).

Fourth staff of music in bass clef. It begins with a whole note G2, followed by a half note G2, and then a half note G2. A slur covers the next two measures, containing a quarter note G2 and a quarter note G2. A third finger fingering (3) is written above the second measure. The staff ends with a whole note G2 marked with an accent (^).

Fifth staff of music in bass clef. It begins with a whole note G2, followed by a half note G2, and then a half note G2. A slur covers the next two measures, containing a quarter note G2 and a quarter note G2. A fifth finger fingering (5) is written above the second measure. The staff ends with a whole note G2 marked with an accent (^).

Sixth staff of music in bass clef. It begins with a whole note G2, followed by a half note G2, and then a half note G2. A slur covers the next two measures, containing a quarter note G2 and a quarter note G2. A third finger fingering (3) is written above the second measure. The staff ends with a whole note G2 marked with an accent (^).

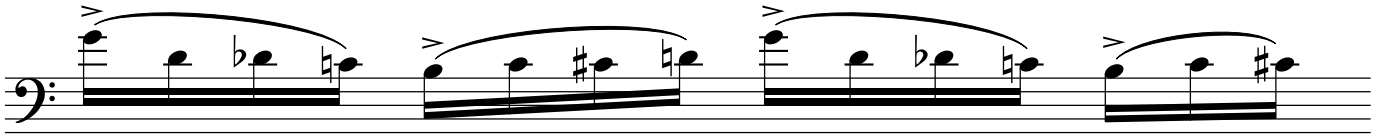
Seventh staff of music in bass clef. It begins with a whole note G2, followed by a half note G2, and then a half note G2. A slur covers the next two measures, containing a quarter note G2 and a quarter note G2. A third finger fingering (3) is written above the second measure. The staff ends with a whole note G2 marked with an accent (^).

2

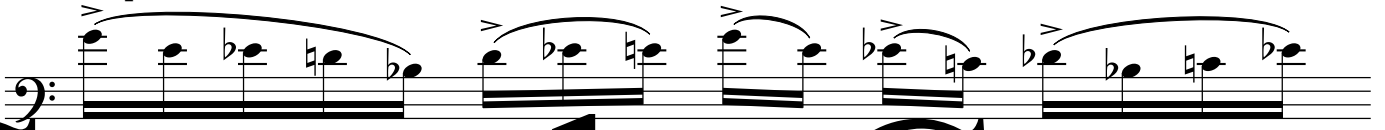
sul tasto.



pp



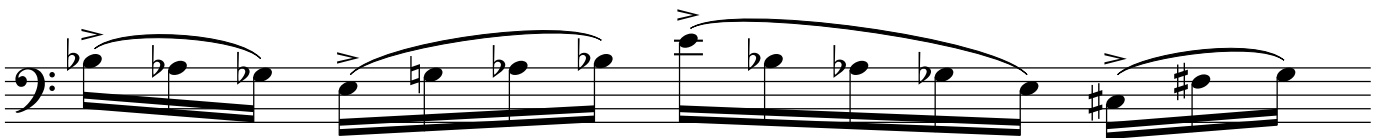
sul pont.



Sample Copy



sul tasto.



sul tasto.



pizz

f

Detailed description: A bass clef staff containing three measures. The first measure has a whole note with a 'pizz' marking above it. The second and third measures each contain a half note followed by a quarter note. The notes are G2, F2, E2, D2, C2, B1, A1, G1. A dynamic marking of *f* is placed below the first measure.

ff *pp* *ff* *pp* *ff* *pp*

Detailed description: Two staves of guitar tablature. The top staff shows fret numbers (x for natural harmonics) and accents (>). The bottom staff shows fret numbers and dynamic markings. The sequence of dynamics is *ff*, *pp*, *ff*, *pp*, *ff*, *pp*.

Sample Copy

ff *pp* *ff* *pp*

Detailed description: Two staves of guitar tablature. The top staff shows fret numbers and accents (>). The bottom staff shows fret numbers and dynamic markings. The sequence of dynamics is *ff*, *pp*, *ff*, *pp*.

ff *pp* *ff* *pp*

Detailed description: Two staves of guitar tablature. The top staff shows fret numbers and accents (>). The bottom staff shows fret numbers and dynamic markings. The sequence of dynamics is *ff*, *pp*, *ff*, *pp*.

ff *pp* *ff* *pp*

Detailed description: Two staves of guitar tablature. The top staff shows fret numbers and accents (>). The bottom staff shows fret numbers and dynamic markings. The sequence of dynamics is *ff*, *pp*, *ff*, *pp*.

pizz.

f

Detailed description: A bass clef staff containing four measures. The first measure has a whole note with a 'pizz.' marking above it. The second and third measures each contain a half note followed by a quarter note. The notes are G2, F2, E2, D2, C2, B1, A1, G1. A dynamic marking of *f* is placed below the first measure.

silent fingering

pp 5 pizz (g string)

Detailed description: A treble clef staff containing four measures. The first measure has a whole note with a 'silent fingering' marking above it. The second and third measures each contain a half note followed by a quarter note. The notes are G4, F4, E4, D4, C4, B3, A3, G3. A dynamic marking of *pp* is placed below the first measure. The number '5' is placed below the second measure. The fourth measure has a whole note with a 'pizz' marking above it and '(g string)' below it.